

## General Switch Interface **RHC12**



The REAC General Switch Interface - RHC12 is an adapter that makes it possible to connect external switches, buddy buttons and similar, to a REAC RCB control box.

RHC12 has:

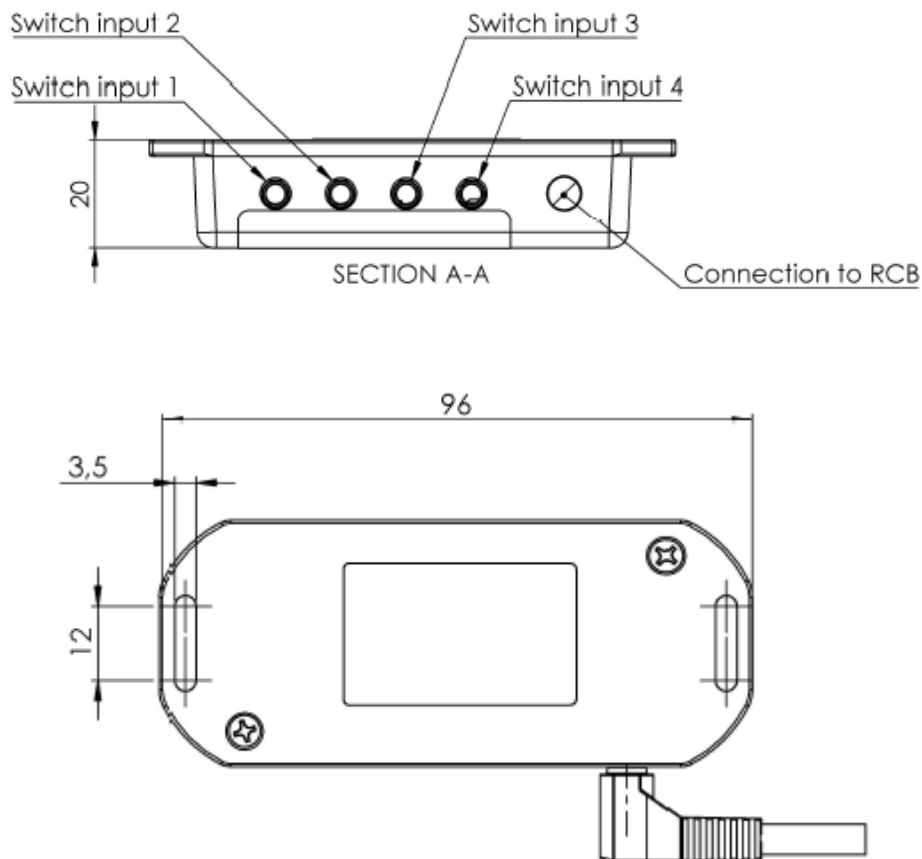
- 4 digital inputs
- 1 input to connect to the RCB

RHC12 is compatible with REAC RCB10, RCB11 and RCB12.

## Standard features

Controls	1 – 4 digital inputs
Connectors	Stereo and/or mono <sup>1</sup>
Protection class	IPX0
Mounting	3.5 mm mounting tracks
Operating temperature	-25°C to +50 °C
Storage temperature	-40°C to +70 °C
Color	Black
EMC conformity	EN 61000-6-2 EN 61000-6-3 EN 60601-1-2 ISO 7176-21

## Dimensions



<sup>1</sup> Must be configured before delivery

© REAC, March 2018, Issue 1.0

REAC is continuously developing our products and can make changes without prior notice. We can't guarantee that the information stated on our webpage or in our written material always is up to date, nor can we take responsibility for any misinterpretation of our written context. Technical specification might change due to load and external circumstances. REAC products shall be tested in its intended application before use.

REAC AB  
J A Wettergrens gata 7  
421 30 Västra Frölunda,, Sweden

REAC Poland Sp. z o.o  
Ul. Metalowców 10  
97-300 Piotrków Trybunalski, Poland

[www.reac-group.com](http://www.reac-group.com)  
E-mail: [info@reac-group.com](mailto:info@reac-group.com)  
Phone: +46 31 350 99 00